

FOREST: The Last Stand

1. Marli Lopez Hope

The Great Forest



Documentary
Duration 12 minutes
Year 2016

2. Karena Goldfinch

Rubicon



Archival inkjet photograph
unframed
Dimensions
59cm H x 84cm W
Year 2018

3. Karena Goldfinch

Greater Glider



Archival inkjet photograph
unframed
Dimensions
39cm H x 26cm W
Year 2021

4. Rod Gray

Brattlings



Acrylic on paper
Dimensions
56cm H x 76cm W
Year 2022

5. Karena Goldfinch

*FOREST:
The Last Stand*



Upcycled woollen blankets botanically printed using foraged Australian native plants
Dimensions
3.1m H x 1.90m W
Year 2022

NFS

6 The Great Tree Project

*Cloak for The Great
Tree Project by
Elizabeth Doig*



Upcycled woollen blankets botanically printed using foraged Australian native plants
Dimensions
150cm H x 200cm W
Year 2019

NFS

7. Pia Johnson

The Road to Nowhere



Archival inkjet photograph
Dimensions
76cm H x 56cm W
Limited edition 5 + 2ap
Year 2022

\$1500

8. Steve Kuitert

Leadbeater's Possum



Archival inkjet photograph
Dimensions
38cm H x 25cm W
Year 2021

\$200

9. Lucille Martin

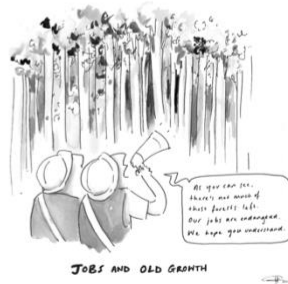
*Toolangi-
A Stitch in Time*



iPhoneography \$2000
Digital image, textile,
print, thread
Dimensions
136cm H x 200cm W
Year 2022

10. Sarah McConnell

Jobs and Old Growth



Ink and coloured
pencil on paper \$300
Dimensions

Year 2018

11. Sarah McConnell

Stupid Bloody Possum



Ink and coloured
pencil on paper NFS
Dimensions

Year 2018

12. Sarah McConnell

Home Sweet Home



Ink and coloured
pencil on paper \$350
Dimensions

Year 2018

13. Sarah McConnell

Remnant



Artists book NFS
Etching, aquatint,
sugarlift, chin colle on
on paper
Dimensions

Year 2018

14. Julian Meehan

Untitled #1



Digital photograph \$500
Pigment ink on archival paper
Dimensions
42cm H x 59cm W
Year 2022

15. Julian Meehan

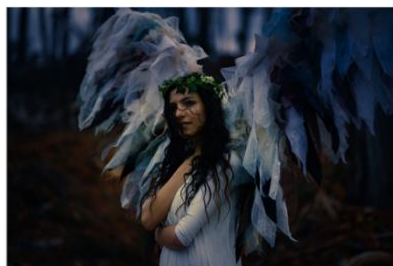
Untitled #2



Digital photograph \$500
Pigment ink on archival paper
Dimensions
59cm H x 42cm W
Year 2022

16. Julian Meehan

Untitled #3



Digital photograph \$500
Pigment ink on archival paper
Dimensions
42cm H x 59cm W
Year 2022

17 Jill Redwood

Untitled #1

Inspired by a US cartoonist and a Victorian Bureaucrat



Cartoon \$100
Digital print on 100% cotton rag
Dimensions
29cm H x 21cm W
Year approx 1990

18. Jill Redwood

Untitled #2



Cartoon \$100
Digital print on 100% cotton rag
Dimensions
29cm H x 21cm W
Year 2003

19. Jill Redwood

Untitled #3



Cartoon \$100
Digital print
on 100% cotton rag
Dimensions
21cm H x 29cm W
Year 2004

20. Jill Redwood

Untitled #4



Cartoon \$100
Digital print
on 100% cotton rag
Dimensions
29cm H x 21cm W
Year 2003

21. Jill Redwood

Untitled #5



Cartoon \$100
Digital print
on 100% cotton rag
Dimensions
29cm H x 21cm W
Year 1998

22. Jill Redwood

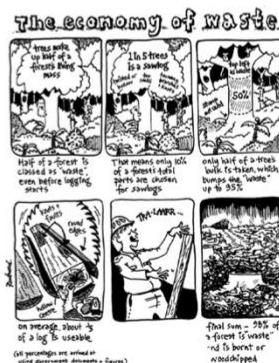
Untitled #6



Cartoon \$100
Digital print
on 100% cotton rag
Dimensions
29cm H x 21cm W
Year 2007

23. Jill Redwood

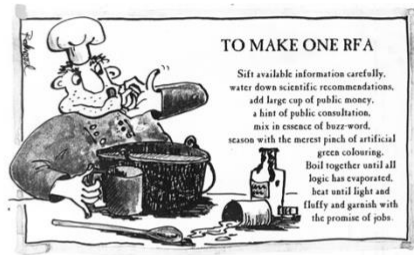
Untitled #7



Cartoon \$100
Digital print
on 100% cotton rag
Dimensions
29cm H x 21cm W
Year 2006

24. Jill Redwood

Untitled #8



Cartoon \$100
Digital print
on 100% cotton rag
Dimensions
21cm H x 29cm W
Year 1996

25. Jill Redwood

Untitled #9



Cartoon \$100
Digital print
on 100% cotton rag
Dimensions
21cm H x 29cm W
Year 2018

26 Sarah Rees

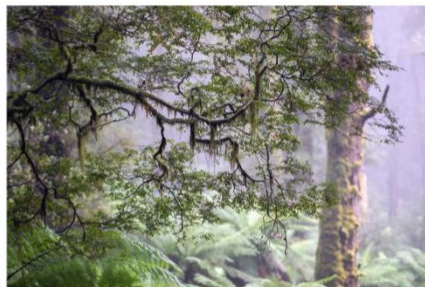
Montaine Fens



Digital photograph \$598
on 100% cotton rag
Dimensions
42cm H x 59cm W
Year 2021

27. Sarah Rees

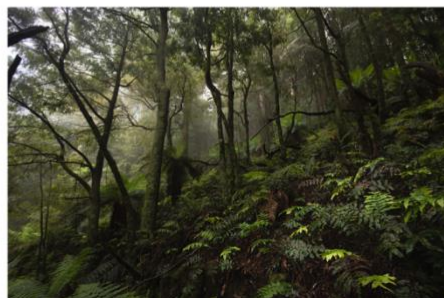
*Mosses adorning
Myrtle Beech trees
on Wurundjeri
Country*



Digital photograph \$598
on 100% cotton rag
Dimensions
42cm H x 59cm W
Year 2021

28. Sarah Rees

*Wattles and
rainforest rising
above a layer of
Hardwater Ferns
on Wurundjeri
Country*



Digital photograph \$598
on 100% cotton rag
Dimensions
42cm H x 59cm W
Year 2021

29. Lisa Roberts

*Gipps Land,
the Colonial project,
Bayled up*



Archival inkjet \$550
print on cotton
rag paper
Dimensions
42cm H x 59.4cm W
Year 2021

30. Lisa Roberts

*Gipps Land,
the Colonial Project,
'Duped' coupe*



Archival inkjet \$550
print on cotton
rag paper
Dimensions
42cm H x 59.4cm W
Year 2021

31. Lisa Roberts

*Gipps Land,
the Colonial Project,
12 Mile Hill, Dargo
High Country*



Archival inkjet \$550
print on cotton
rag paper
Dimensions
42cm H x 59.4 W
Year 2021

32. Lisa Roberts

*Gipps Land,
the Colonial Project,
Cliffs of Moher,
Bruthen*



Archival inkjet \$550
print on cotton
rag paper
Dimensions
42cm H x 59.4 W
Year 2021

33. Lisa Roberts

*Gipps Land,
the Colonial Project,
Headwaters of the
Swifts Creek*



Archival inkjet \$550
print on cotton
rag paper
Dimensions
42cm H x 59.4cm W
Year 2021

34. Lisa Roberts

*Gipps Land,
the Colonial project,
Mellickmunjie- This
forest was not dead*



Archival inkjet print on cotton rag paper
Dimensions
42cm H x 59.4cm W
Year 2021

35. Lisa Roberts

*Gipps Land,
the Colonial Project,
Mount Delusion's
east face*



Archival inkjet print on cotton rag paper
Dimensions
42cm H x 59.4cm W
Year 2021

36. Lisa Roberts

*Gipps Land,
the Colonial project,
Scorched Earth Policy
Mitchell River National Park*



Archival inkjet print on cotton rag paper
Dimensions
42cm H x 59.4cm W
Year 2021

37. Lisa Roberts

*Gipps Land,
the Colonial project,
Ski Wax Coupe
Mellickmunjie*



Archival inkjet print on cotton rag paper
Dimensions
42cm H x 59.4cm W
Year 2021

38. Chris Taylor

*Looking towards Mt Torbrek
on Taungaurong Country*



Archival inkjet print on 100% cotton rag
Dimensions
59cm H x 42cm W
Year 2021

39. Chris Taylor

Snow Gum standing tall on a ridgeline on Taungurung Country



Archival inkjet print \$598
on 100% cotton rag
Dimensions
59cm H x 42cm W
Year 2016

40. Chris Taylor

Old Growth Mountain ash tree with snow and lichens on Gunaikurnai Country



Archival inkjet print \$598
on 100% cotton rag
Dimensions
59cm H x 42cm W
Year 2017

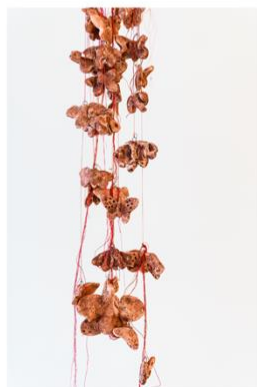
41. University of Melbourne Early Learning Centre in Abbotsford

a. *We are Almost Still Here*
greater glider
leadbeater's possum
and sooty owls.



glazed earthenware and thread NFS
Dimensions
20cm H x 100cm W
Year 2022

b. *Hanging by a thread*
bogong moths



Iron oxide on earthenware suspended on red thread NFS
Dimensions
100cm H x 10cm W
Year 2022

c. Leaf Poems



A collection of NFS
glazed earthenware
leaves
Dimensions
Approx 3cm H x 13cm W
Year 2022

d. Watchful Sooty Owls



A collection of NFS
glazed earthenware
sooty owls
Dimensions
Approx 5cm H x 3cm W
Year 2022